

## Provincia di Brescia

Dr. Giulio G. Frangipani - *Progettazione e Costruzione di  
ed. e Progettazione di Interni* - n. 27/28

ARCH. CAIMI FRANCESCO

ALESSIO CARMINA

Sabbio Chiave

10

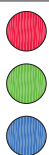
100

100

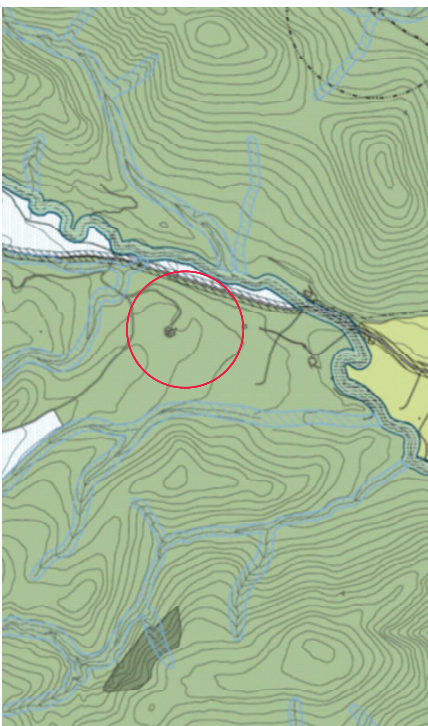


---

ADDIT:



area di salvaguardia.



A detailed topographic map of the Los Angeles basin and surrounding regions. The map features brown contour lines indicating elevation, with labels for 200, 300, 400, and 500 feet. Key geographical features include the San Gabriel Mountains to the north, the San Gabriel River, and the Los Angeles River. A red circle is drawn on the map, highlighting a specific area in the central part of the basin. The map also shows various roads, towns, and other landmarks.